

ORGANIZATION CHARTS FOR LIFERAY



THE OPEN DOOR TO YOUR ENTERPRISE

ORX traverses Liferay organizations, draws the tree structure and provides interaction.

It's simply: embed the app on your department- or any other page. ORX detects the current organization context automatically and highlights it. Static preset is also supported.

Nodes are interactive and provide information, opening profile pages - or if linked with EasyView - updated members list corresponding to the department clicked.

Info: <http://www.horiworld.com/orx>

VISUALIZE THE ENTERPRISE



- Charts following Liferay organization structure
- Open departments profile pages
- Display quick information
- Rich configuration options
- Link with EasyView: display members



ORX: ORGANIZATION CHARTS FOR LIFERAY PORTALS

1 AUTOMATIC

Automatic context detection and highlighting of current organizational unit.

2 NAVIGATION

Open profile pages by a simple click on any node.

3 LOCALIZATION

User Interface and Online Help in English and German. Setup in English.

FEATURES

CONNECTED



Link ORX with EasyView Member Lists and you get interesting opportunities.

Link ORX with EasyView member lists and you get a dynamic employee directory..

CONFIGURATION



Adopt Corporate Identity in ORX: Set font styles and coloring.

Set action from list to click, doubleclick and mouseover events.

If needed (on static pages), preset organizational unit. Otherwise ORX follows automatic context detection.

And more setup features available - makes your ORX tailor made.

USE CASES



Whether being used on intranet, extranet or internet: Wherever a comfortable enterprise navigation is needed, ORX is your first choice.

THE DYNAMIC EMPLOYEE DIRECTORY

Link ORX with EasyView (screen reports tool) and you get a graphical enterprise navigation. Perfect as overview and contact point provider.



Nothing easier than linking ORX with EasyView! Add both apps to a page, activate link feature, that's it!

EasyView members list will be configured by dragging fields from data catalog's user folder to the definition. Corresponding to the context (e.g. extranet), you're field selection contains images linked to individual's profile page, mail addresses, phone, Skype and more.

EasyView does not only provide user information at all: there are folders with fields for Contacts, Organizations, Groups, Documents, Web Content and more.

There are numberless use cases for EasyView. 21 of them I listed on horiworld.com - page Use Cases - with full working examples.

THE TRANSPARENT ENTERPRISE

By using a graphical approach to your enterprise, accessing departments and resources comes much easier.

Popup windows display information in brief, a click opens a department's profile page or displays members in EasyView. What you want more?

ORX follows your setup: Assign Click-, Double Click- and Mouseover-Events to target actions from list.

"You get animated for a virtual enterprise walkthrough - get out the most of Liferay!"

AVAILABILITY

IM LIFERAY MARKETPLACE

- Liferay 7.1 CE/DXP
- Liferay 7.2 in Kürze

LANGUAGES

- User Interface
 - English/German
- Configuration
 - English
- Other languages on demand

PRICES

BASED ON A LIFERAY INSTANCE. FREE IN COMBINATION WITH EASYVIEW!

- License: \$ 300/€ 270
- *Subscription: € 68/\$ 75/Year

** Bug fixing, support via forms. New features if possible.*

USER INTERFACE

CONFIGURATION

SETUP DIVIDED IN TABS

DOCUMENTATION

OPTIONAL
DEPARTMENT
PRESET

ASSIGNMENT OF
EVENTS TO
BEHAVIOURS

User Interface
Logic
Chart
Nodes

[Download Admin's Doc](#)

Organization Preset

Board of Directors

Behaviour
Click

EASYVIEW

Doubleclick

PAGELOAD

Quicktip content on hover

MEMBERS

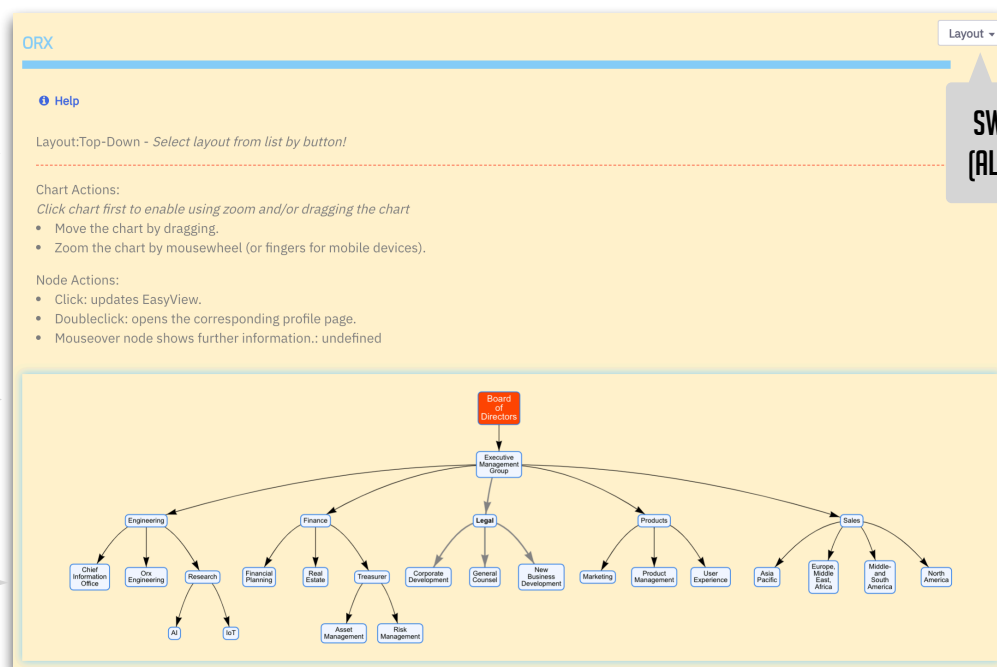
CHART

ONLINE HELP
(COLLAPSABLE)

SWITCH LAYOUT
(ALL DIRECTIONS)

CURRENT UNIT
HIGHLIGHTED

NODES PROVIDE
INTERACTION



ABOUT

Swiss software developer Andreas Horlacher creates apps for Liferay portals. His products are also distributed by Comundus GmbH, a German company.

CONTACT

Andreas Horlacher - Waltergasse 1 - CH-3930 Visp
Web <http://www.horiworld.com>
Mail andreas.horlacher@horiworld.com